



PLUG & PLAY TRAILER WIRING HARNESS for GL 1800 7673

PARTS INCLUDED

- 1 Trailer Wiring Isolation Harness and Relay
- 1 GL 1800 Trailer Wiring Sub Harness
- 1 Inline Fuse "Y" Harness with Heat Shrink Covered Butt Connectors
- 1 Hardware Kit Containing:
 - 6 8" Black Nylon Wire Ties
 - 1 1/4" Ring Terminal
 - 1 Dielectric Grease Pack
 - 2 1" X 2" Adhesive Back Hook Strap
 - 2 1" X 2" Adhesive Back Loop Strap
 - 1 Alcohol Pad
- 1 Installation Instructions

Please read and understand entire instructions before starting installation.

THANK YOU FOR CHOOSING KÜRYAKYN!

IN ORDER TO PROTECT YOU AND OTHERS FROM POSSIBLE INJURY AND/OR PROPERTY DAMAGE OR LOSS, PLEASE PAY CLOSE ATTENTION TO ALL INSTRUCTIONS, WARNINGS, CAUTIONS AND ATTENTION NOTES REGARDING THE USE AND CARE OF THIS PRODUCT.

WARNING! THIS INDICATION ALERTS YOU TO THE FACT THAT IGNORING THE CONTENTS DESCRIBED HEREIN CAN RESULT IN POTENTIAL DEATH OR SERIOUS INJURY.

ATTENTION! This indication alerts you to the fact that ignoring the contents described herein may negatively affect product performance and functionality.

TOOLS SUGGESTED

Set of Hex Wrenches, Combination Wrenches, Wire Stripper, Crimping Pliers, Side Cutters, Test Light or Multi Meter, Electrical Tape

STRICTLY OBSERVE THE FOLLOWING GUIDELINES IN ORDER TO USE THE PRODUCT PROPERLY AND AVOID POTENTIALLY DANGEROUS ACCIDENTS.

STEP 1 Read and understand all steps in the instructions before starting the installation. Park the motorcycle on a hard, level surface and turn off the ignition.

ATTENTION! A factory service manual may be helpful in performing this installation. Do not attempt to perform this installation if you are not confident in your ability to complete all of the steps in the procedure; consult a trained technician.

STEP 2 Remove four fasteners that secure the rear license plate panel. Older bikes will have a fifth behind the license plate. PIC 1

STEP 3 Gently pull off the back panel exposing the wiring harness. (Red and Blue plugs)

ATTENTION! Kuryakyn recommends the use of dielectric grease on electrical connections.

CUSTOMER SERVICE

877.370.3604 (toll free)

INSTALLATION QUESTIONS

techsupport@kuryakyn.com
or call 715.247.2983

LIMITED WARRANTY

Kuryakyn warrants that any Kuryakyn products sold hereunder, shall be free of defects in materials and workmanship for a period of one (1) year from the date of purchase by the consumer excepting the following provisions:

- Kuryakyn shall have no obligation in the event the customer is unable to provide a receipt showing the date the customer purchased the product(s).
 - The product must be properly installed, maintained and operated under normal conditions.
 - Kuryakyn makes no warranty, expressed or implied, with respect to any gold plated products.
 - Kuryakyn shall not be liable for any consequential and incidental damages, including labor and paint, resulting from failure of a Kuryakyn product, failure to deliver, delay in delivery, delivery in nonconforming condition, or for any breach of contract or duty between Kuryakyn and a customer.
- Kuryakyn products are often intended for use in specific applications. Kuryakyn makes no warranty if a Kuryakyn product is used in applications other than intended.
- Kuryakyn electrical products are warranted for one (1) year from the date of purchase by the consumer. L.E.D.'S contained in components of Kuryakyn products will be warranted for defects in materials and workmanship for 3 years from the date of purchase where as all other components shall be warranted for one(1) year. This includes, but is not limited to; control modules, wiring, chrome & other components.

• Kuryakyn makes no warranty of any kind in regard to other manufacturer's products distributed by Kuryakyn. Kuryakyn will pass on all warranties made by the manufacturer and where possible, will expedite the claim on behalf of the customer, but ultimately, responsibility for disposition of the warranty claim lies with the manufacturer.

ABOUT OUR CATALOG

For purchasing Kuryakyn® products, you can receive a complete catalog free of charge. Send the Proof-of-Purchase below with your address to: Kuryakyn, P.O. Box 339, Somerset, WI 54025. Please indicate either Accessories Catalog for Harley-Davidson® or GL & Metric Cruisers.

Be sure to ask your local dealer about other Kuryakyn® products, the motorcycle parts and accessories designed for riders by riders.

©2005 Kuryakyn USA® All Rights reserved.



STEP 4 On the bike, disconnect the red plug that has an orange wire. Take the supplied harness, connect the male and female plug (3-wire plug with a single yellow wire running to it), into the disconnected stock red male and female plugs. The sub harness acts like a t-harness and will go between the stock red plugs. PIC 2

STEP 5 On the bike, disconnect the blue connector that has a light blue wire. Take the supplied harness, connect the male and female plug (3-wire plug with the green and brown wires) into the disconnected stock blue male and female plugs. The sub harness acts like a t-harness and will go between the stock blue plugs. PIC 2

STEP 6 Locate the blue connector on the bike that has the green wires. Disconnect it and place the two-pin connector with the blue wire in to the male and female ends. PIC 3

STEP 7 You should have one four-pin connector left. This connection will be used to supply the power to the trailer. Plug this into the isolation relay. PIC 4

STEP 8 Remove the four mounting bolts from the passenger handles that secure the seat and remove the seat. Remove the battery cover located on the driver's left hand side just above the passenger floorboard.

STEP 9 Take a piece of wire or a straight coat hanger (to pull the wire through) and run it between the frame and saddlebag, above the battery until you can reach it from the back of the bike. The wire should come out to the top left of the inside back panel.

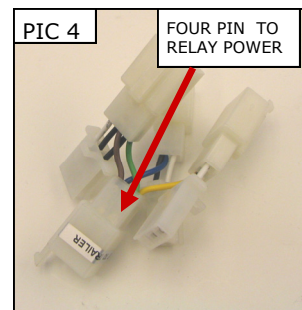
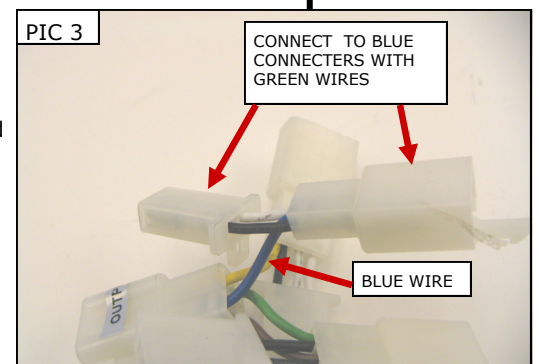
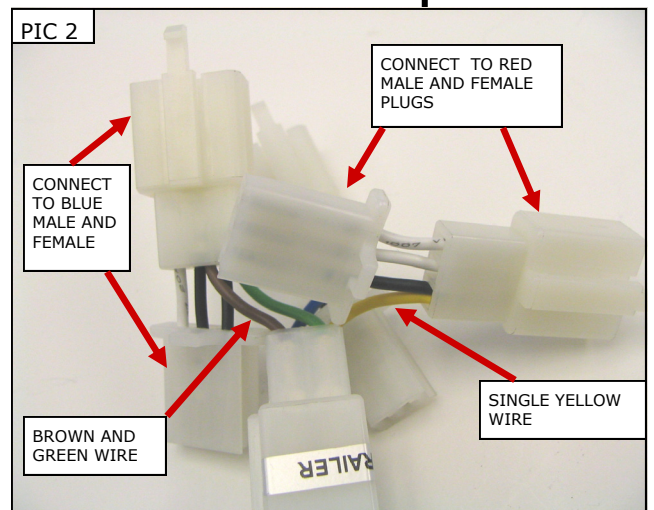
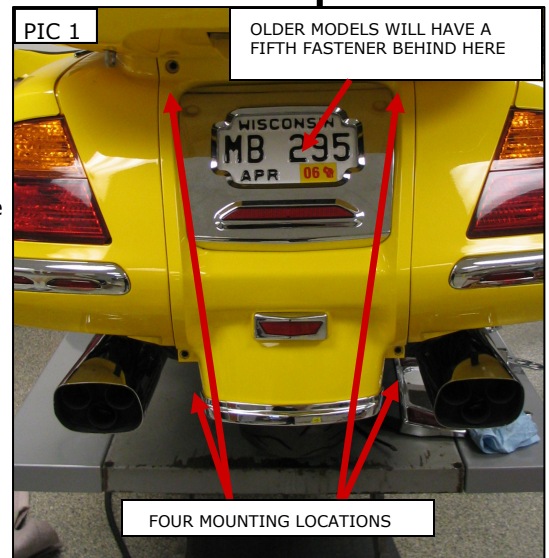
STEP 10 On the supplied Trailer Isolation Relay Kit, locate the harness with the red, red with a black stripe power wire and black ground wire in the black sheathing. Tape the exposed ends of the harness to the wire that was run in Step 9. Secure the wire tight enough that it will not come undone in the routing process.

STEP 11 Pull the wire or coat hanger back toward the front with the wires still secured to it. Once the wires are pulled far enough to reach the battery, they can be removed from the wire/coat hanger.

STEP 12 Take the red power wire and connect it to one end of the "Y" wire attached to the fuse holder with the butt connectors. PIC 5 Slide the wire into the end of the butt connector and crimp.

STEP 13 The red wire with a black stripe is a power wire that can be used for keyless entry power or interior lighting on the trailer. If your trailer **DOES NOT** need an extra power wire for accessory lighting, then **DO NOT** connect this to the other "Y" wire from the fuse holder. Wrap the butt connector on the unused red "Y" wire with electrical tape or heat shrink to prevent an unwanted short, as it will have power to it all the time, and secure it out of harms way. Proceed to Step 16.

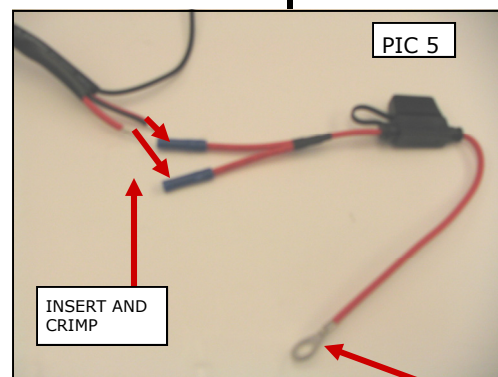
WARNING: WHEN THE SINGLE RED WIRE WITH THE RING TERMINAL IS CONNECTED TO THE BATTERY IN STEP 15, THE RED WIRE WITH THE BUTT CONNECTOR WILL HAVE POWER AT THE BUTT CONNECTOR. **MAKE SURE IT IS CAPPED OFF AS IN STEP 13 BEFORE ATTACHING THIS WIRE TO THE BATTERY!**



STEP 14 If your trailer **DOES** need an extra power wire for accessory lighting, Take the red with black stripe power wire and connect it to the end of the second "Y" wire with the attached butt connector. PIC 5 Slide the wire into the end of the butt connector and crimp.

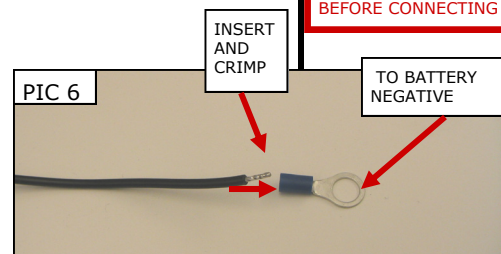
NOTE: If you would like to have "keyed" power to the red with black stripe wire, instead of constant power, use a test light to find a "keyed" wire on the bike and attach this wire to it. Be sure to cap off the unused butt connector on the "Y" wire from the fuse holder as in Step 13. Make sure that the added amperage from the trailer accessory will not overload the chosen circuit.

WARNING: WHEN THIS SINGLE RED WIRE WITH THE RING TERMINAL IS CONNECTED TO THE BATTERY IN STEP 15, THE RED WIRE WITH THE BLACK STRIPE WILL HAVE POWER AT THE OTHER END OF IT. **MAKE SURE IT IS CAPPED OFF AS THE RED WIRE IN STEP 13, OR ATTACHED TO THE TRAILER PLUG, BEFORE ATTACHING THIS WIRE TO THE BATTERY!**

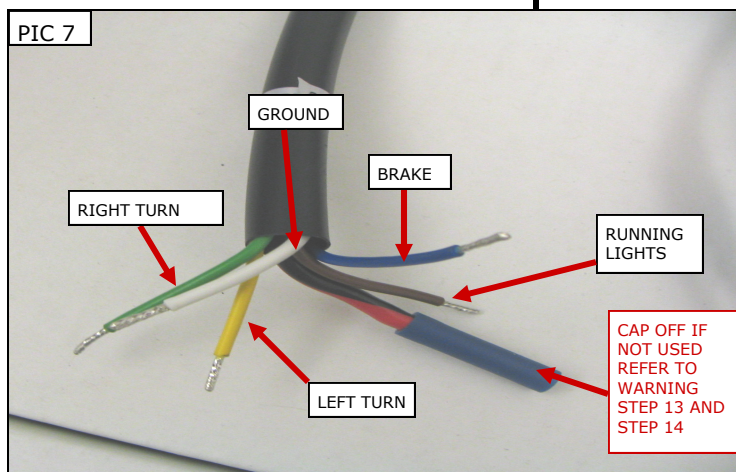


TO BATTERY POSITIVE REFER TO WARNING STEP 13 OR STEP 14 BEFORE CONNECTING

STEP 15 Attach the single red wire from the other end of the fuse holder with the ring terminal to the positive side of the battery. PIC 5 Connect the long black ground wire to the negative on the battery using the supplied 1/4" ring terminal (you will need to crimp this to the black wire). PIC 6



STEP 16 On the back of the bike, plug the Trailer Isolation Relay Kit to the sub harness four pin connector shown in PIC 4. With the two (four pin) plugs connected, use a test light to check for proper function. Turn the key on and test both signals. (Yellow is left turn and Green is right turn) Brake lights (Blue) and Run light (Brown). The red wire with a black stripe is a power wire that can be used for keyless entry power or interior lighting on the trailer. The white wire is ground. PIC 7



STEP 17 Wire up any style connector or 5-4 converter needed for your application.

STEP 18 Tie up any excess wire length with the provided cable ties. Locate an area on the bike that you will be able to mount the trailer isolation relay box. Take the provided 1" x 2" Hook Strap and the 1" x 2" Loop Strap and place one on the back of the trailer isolation relay and the other on the bike in a good and safe area that is out of harms way.

ATTENTION! Secure all wiring away from any moving parts, pinch points or extreme heat. Kuryakyn **WILL NOT** issue a warranty on any electrical component that fails due to pinched, crimped, broken, abraded, melted or frayed wires.

STEP 19 Re-install the battery cover and the seat and secure with the mounting hardware that was removed in step 9. Put the rear panel back on and re-install the four or five mounting bolts.

WARNING! ENSURE PROPER TRAILER AND MOTORCYCLE LIGHT OPERATION BEFORE RIDING THE MOTORCYCLE. VISIBILITY IS A MAJOR CONCERN FOR MOTORCYCLISTS. TRAILER OR MOTORCYCLE LIGHT MALFUNCTION COULD RESULT IN DEATH OR SERIOUS INJURY.

ATTENTION! It is the installer's responsibility to ensure that all of the fasteners (including pre-assembled) are tightened before operation of the motorcycle. Kuryakyn will not issue a warranty on components lost due to improper installation. Periodic maintenance may be required.