



SATIN BLACK DRINK HOLDER WITH 1" MOUNT AND MESH BASKET

1729

Thank You For Choosing Kuryakyn!

Protect yourself and others from potential injury and property damage or loss. Pay close attention to all instructions, warnings, cautions, and notices regarding the installation, use, and care of this product.

WARNING

THIS INDICATION ALERTS YOU TO THE FACT THAT IGNORING THE CONTENTS DESCRIBED HEREIN CAN RESULT IN POTENTIAL DEATH OR SERIOUS INJURY.

NOTICE

This indication alerts you to the fact that ignoring the contents described herein may negatively affect product performance and functionality or damage the product itself or the product to which it is being attached.

ENSURE THAT THE FOLLOWING PARTS HAVE BEEN INCLUDED IN THE KIT:

- 1 1" Handlebar Clamp
- 1 Drink Holder Basket
- 1 Anti-Seize Packet
- 1 Hardware Kit Containing:
 - 2 Shims
 - 1 5/16" Split Lock Washer
 - 1 Thumb Nut
- 1 Installation Instructions

YOU WILL ALSO NEED:

Set of hex wrenches, 7/16" open end wrench

STEP 1 Read and understand all steps in the instructions before starting the installation. Park the motorcycle on a hard, level surface and turn **IGN OFF**.

NOTICE

These installation instructions contain important information. Ensure that the end user receives this copy and is aware of its importance for future use.

NOTE: Universal fitment for 1" handlebar applications. Universal Basket Holder will accept most average sized cups, cans, bottles, and mugs with a 2" to 3-1/2" diameter.

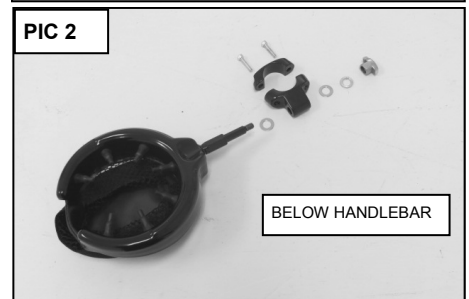
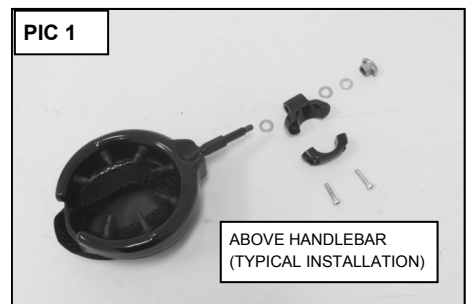
NOTICE

Avoid damage to the motorcycle. Protect painted surfaces with a soft cloth or blanket.

STEP 2 Refer to **PIC 1 and 2**. The Handlebar Clamp can be installed so the Drink Holder Basket is above OR below the handlebar.

Determine a suitable mounting location for the Drink Holder.

Ensure that the mounting location will not interfere with the normal operation of the motorcycle.





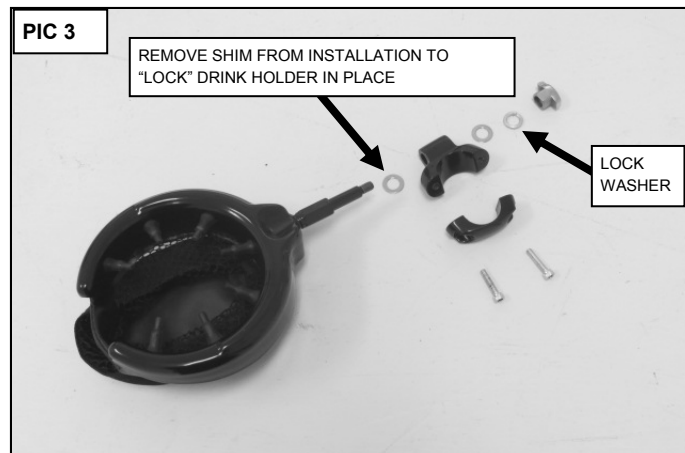
STEP 3 Remove the two screws from the Handlebar Clamp.

STEP 4 Apply Anti-Seize to the threads of the screws; hold the clamp halves together on the handlebars in the desired location; re-install the screws; leave the screws finger tight for now.

Determine the mounting location and orientation of the Drink Holder before fully tightening the two screws. The clamp may leave marks on the handlebar when tightened down.

STEP 5 Refer to **PIC 3**. The Drink Holder can be installed so that it pivots in the clamp (use Shim) OR “locks” in place (do not use Shim).

Insert the Drink Holder stud through the Clamp, place one of the Shims and Lock Washers over the protruding end. Apply anti-seize to the threaded portion of the Stud; secure with the Thumb Nut.



STEP 6 Once you have the Drink Holder in the desired position, ensure that it will not interfere with the proper operation of the motorcycle by turning the handlebars to their full stop positions in both directions. Tighten all hardware.

⚠ WARNING

ENSURE THAT THERE IS PROPER CLEARANCE AT ALL POINTS WHEN THE HANDLEBARS ARE TURNED FROM STOP TO STOP. INSUFFICIENT CLEARANCE MAY CAUSE DAMAGE TO THE MOTORCYCLE OR CAUSE LOSS OF CONTROL THAT COULD RESULT IN SEVERE INJURY OR DEATH.

DO NOT ACCESS OBJECTS IN THE DRINK HOLDER WHILE RIDING THE MOTORCYCLE. DISTRACTED RIDING CAN LEAD TO LOSS OF CONTROL RESULTING IN INJURY OR DEATH.

NOTICE

Do not overload the Drink Holder Basket with excessive weight.

The adjustability of the Drink Holder was not intended to prevent spills.

Ensure that the Drink Holder is secure on the Clamp and that the Clamp is secure on the motorcycle. It is the end user's responsibility to ensure that all fasteners (including pre-assembled) are tightened before operation of the motorcycle. Kuryakyn will not provide warranty coverage on existing or new components lost or damaged due to improper installation or lack of maintenance. Periodic inspection and maintenance are required on all fasteners.

LIMITED WARRANTY

Kuryakyn warrants that any Kuryakyn products sold hereunder, shall be free of defects in materials & workmanship for a period of one (1) year from the date of purchase by the consumer excepting the following provisions:

1. Kuryakyn shall have no obligation in the event the customer is unable to provide a receipt showing the date the customer purchased the product(s).
2. The product must be properly installed, maintained & operated under normal conditions.
3. Kuryakyn shall not be liable for any consequential & incidental damages, including labor & paint, resulting from failure of a Kuryakyn product, failure to deliver, delay in delivery, delivery in nonconforming condition, or for any breach of contract or duty between Kuryakyn & a customer.
4. Kuryakyn products are often intended for use in specific applications. Kuryakyn makes no warranty if a Kuryakyn product is used in applications other than intended.
5. Kuryakyn electrical products are warranted for one (1) year from the date of purchase by the consumer. L.E.D.'s contained in components of Kuryakyn products will be warranted for defects in materials & workmanship for 3 years from the date of purchase whereas all other components shall be warranted for one (1) year.
6. Merchandise purchased directly from Internet auction sites or any other third party seller is considered sold as is & shall not carry a Kuryakyn warranty. All warranty claims must be directed to the original seller. If unsure please contact the seller to verify they are an authorized Kuryakyn retailer.

RETURN POLICY

Merchandise determined to be defective may be returned up to one year from the date of purchase. Returns must be processed through original seller. Returned merchandise for any other reason other than warranty claims must be in like new condition & subject to a 20% restocking fee. All returns are subject to inspection for determination of full or partial credit. Any returned part that shows evidence of being used or installed contrary to manufacturer's instructions, &/or subjected to improper handling, packaging or return shipping by the customer, will not be eligible for exchange, refund or warranty consideration. All returned electrical items will be inspected & tested. If electrical item is deemed functional, no credit will be issued & item will be returned. All sales are final on discontinued or closeout merchandise.