

installation instructions

Milwaukee- Eight Softail rear fender “ Bobber ” from 2018, steel



Step 1:

- Remove the swingarm to drill the fender mounting holes in the swingarm.



picture

1

Step 2:

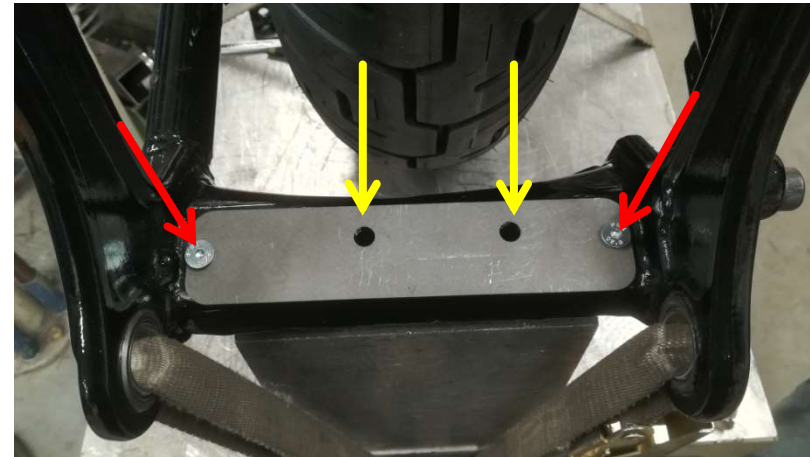
- Pos.4 Position the drilling template on the swingarm using two M6 screws. (Red arrows picture 3)
- Make sure the “V” is visible and facing forward in the direction of travel. (see picture 2)
- As shown in the picture, drill a $\varnothing 6.8\text{mm}$ hole at the point with the yellow arrows and cut an M8 thread.
- After the thread has been cut, the drilling template can be disposed of.



picture

03/11/2019

2



picture

3

D. Grzechca

3

Step 3:

- Reassemble the swingarm to the frame.
- Place the mudguard on the wheel and reassemble the wheel on the swingarm.



Step 4:

- Mount the wheel with the screws item 10 and nut item 9 and tension the belt.
- Screw with nut pos. 9 pos. 2&3.



03/11/2019

picture

-



D. Grzechca

picture

-

Step 5:

- Place a cloth on the swingarm to place the fender on it.
- Place a wedge between wheel and fender so you can screw the arches together.



03/11/2019

picture

—



D. Grzechca

picture

—

Step 6:

- Screw the arches together as shown in the picture.
- Apply screw lock to the screws.



picture
9

Step 7:

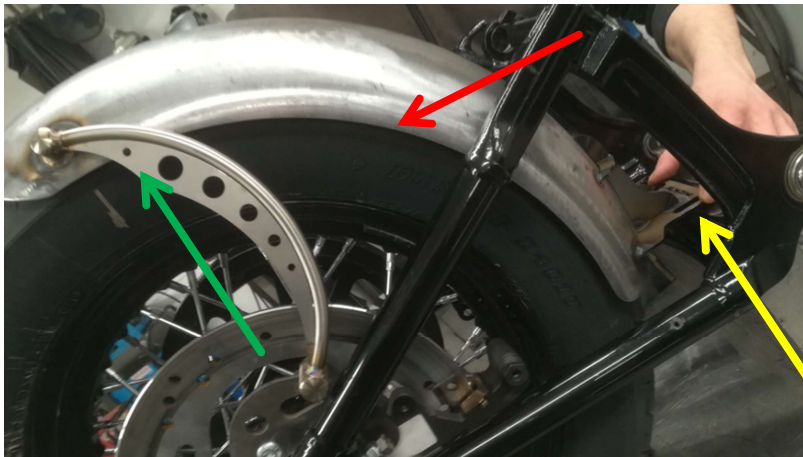
- Screw bends with screw item 5, using washers item 8.



picture
10

Step 8:

- After the arches are screwed on, align the edge of the mudguard with the edge of the wheel .
- Finally, screw the mudguard to the swing arm (yellow arrow), with items 7 & 8 and make sure that the distance is the same on both sides. (Picture 12)
- The turn signals are attached to the position with the green arrow.



picture

11

03/11/2019



picture
12

D. Grzechca

9