

## TOOL POUCH INSTALLATION INSTRUCTIONS

### WARNING:

#### READ ALL INSTRUCTIONS THOROUGHLY BEFORE STARTING!

Use of this product in a manner other than it's intended purpose could cause loss of motorcycle control and damage including personal injury or death. Follow the instructions below.

- ⚡ You must mount bag properly and securely before riding motorcycle. Failure to do so could result in damage to the product and motorcycle.
- ⚡ You are responsible for the correct installation and safe use of these bags. Seek qualified instruction if you are uncertain about their capabilities and limitations
- ⚡ Bag must be tied down and secured to a solid part of the motorcycle to prevent any movement during operation.
- ⚡ Do not exceed maximum weight of six pounds per bag.
- ⚡ Do not use these bags if the mounting system has deteriorated, loosened or is beginning to fail
- ⚡ DO NOT ATTEMPT TO USE THIS BAG IF....
  - ...you do not understand these instructions
  - ...you do not understand any part of the mounting system
  - ...you have any doubts as to the security of the mounting system
- ⚡ If you have any doubts or questions, SEEK PROFESSIONAL HELP at your qualified motorcycle dealer or call Saddlemen at 310-638-1222.

**Motorcycling is an inherently dangerous activity. Installation of any accessory, including handlebar bag, can add to the danger if they are not installed safely. You must install this product in a manner in which it will not contact any part of the drivetrain, suspension or steering, or interfere with any operation of the motorcycle. If you do not know how to do this, or have any doubts as to your ability, please see a qualified motorcycle mechanic.**

#### PARTS LIST

1 -Tool pouch      2 - Nylon straps      2 - Velcro Straps      1 - Instructions

#### INSTALLATION INSTRUCTIONS

1. Saddlemen tool bags are designed as a universal fit, using different combination of straps to connect to handlebars, back seat, luggage rack or sissybar.
2. One or two straps can be used to attach the bag to the motorcycle depending on application.
3. Insert the strap(s) into each of the square strap anchors located on the back of the bag. Straps can be inserted either vertically or horizontally to best suit your mounting location. See Fig. A.
4. For traditional handlebar mount, use two straps around the handlebars, with the bag in front of the handlebars. Make sure to tighten both straps securely so bag does not move around while riding.

*DO NOT connect any straps to flexible or moving parts (rubber mounted turn signals, swingarm, shocks)*

*NOTE: You must tuck away or tie down all loose mounting straps BEFORE you ride the motorcycle. See warning information above.*

*NOTE: Recheck strap tightness each time you stop riding.*

#### FEATURES

**WATER RESISTANT MOUNTING SYSTEM** The tool bags utilize two external strap anchors that allow multiple installation options. The external anchors do not require the straps to be routed inside the bags like many other brands.

#### CARE AND CLEANING

Your Saddlemen tool pouch require almost no maintenance, but to keep them looking good, here's what we recommend:

1. You can simply wipe down the bag with a clean, damp cloth, but to really make them shine use Saddlemen Seat and Saddlebag Wash, part number 3101, and Saddlemen Seat and Saddlebag Conditioner, part number 3102, both available through your local dealer.
2. Keep the saddlebags away from extreme heat sources like your bike's exhaust pipes.

#### SADDLEMEN'S ONE-YEAR WARRANTY

We guarantee our products for a period of one year after retail purchase, against defects in materials and workmanship. Damage caused by improper use or incorrect mounting is not warranted. Our warranty has other provisions and conditions; please contact Travelcade/Saddlemen for full details. If your Saddlemen product is not performing to your expectations, please call us directly and our customer service staff will be happy to help. You can count on Saddlemen's quality, innovation, service and style.

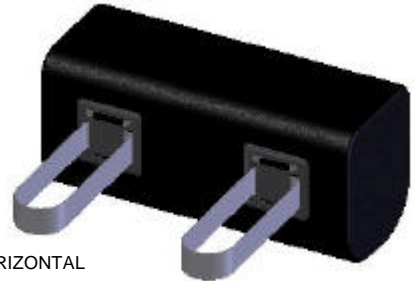


Fig. A

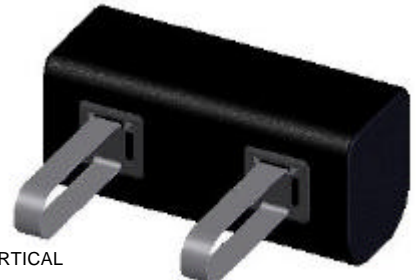
Straps can be used horizontally or vertically, depending on what you're mounting the bag to.



SINGLE HORIZONTAL



DOUBLE HORIZONTAL



DOUBLE VERTICAL



CENTERED VERTICAL